

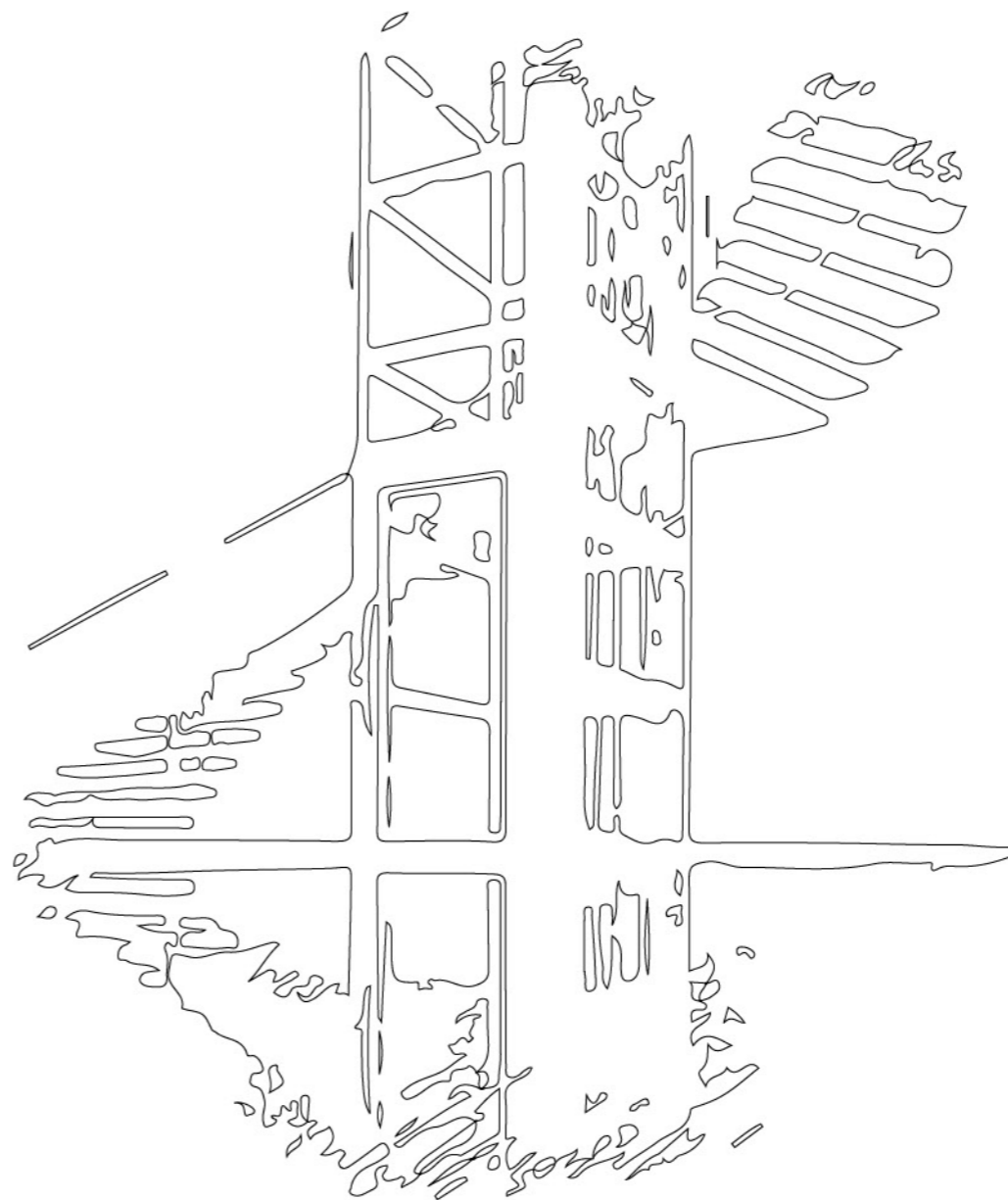
服务热线 Service Hotline

400-110-5088

NB FUJI

**NB FUJI
VILLA ELEVATOR**

别墅电梯



NB FUJI

中国·浙江泰禾电梯有限公司
CHINA ZHEJIANG TAIHE ELEVATOR CO., LTD.

 中国嘉兴南湖区七星街道东大路508号
No. 508, Dongda Road, Qixing Street, Nanhu District, Jiaxing, China

 www.nbfuji.com

2022-V3.0 版

扫描二维码,
查看NB FUJI电梯官方网站
Scan the QR code to view the official website of
NB FUJI Elevator



精湛技艺 创新出行
Excellent Skills, Innovative Travel

EXTRAORDINARY TRAVEL, INTELLIGENT FUTURE

出行不凡, 智创未来

NB FUJI

我们坚持的, 不止是精工品质, 更是优质的乘行体验,
我们追求的, 不止是尖端技术, 更是人性化的科技美,
质感、美感、高级感……

从细节到整体,

从过去到未来,

NB FUJI 电梯, 出行不凡, 智创未来

What we insist on is not only the exquisite craftsmanship quality,
but also the high-quality riding experience,

What we pursue is not only the cutting-edge technology, but also
humanized technological beauty.

Quality, beauty, high-grade sense...

From the details to the whole,

From the past to the future,

NB FUJI elevator aims to provide extraordinary travel, and
intelligent future

LONG HISTORY CRAFTSMAN SPIRIT AND INTELLIGENCE

源远流长的匠魂智心

精诚·质感·体验

Sincerity · Quality · Experience

回顾过往，正视现在，预见未来

NB FUJI 电梯的斐然业绩都源自于卓越传承和创新变革的相互交融。

在源远流长的成长中，NB FUJI 电梯坚信工匠精神的大生命力，沿承日本大工业时代一直以来的匠心灵魂、职人理念和精湛技艺，创造了一件件呈现生活质感的非凡杰作。

同时，NB FUJI 电梯以持续的技术创新，预见市场发展，洞察生活所需，以科技美学精品诠释新生代典范，在当今乃至未来智慧化时代表现得游刃有余。

大智所驱，技领未来

作为高品质电梯服务的引领者，极富前瞻思维和责任情怀的 NB FUJI 电梯开始新的进化之旅，以更人性、环保和智慧的解决方案服务城市生活，为社会带来高品位的美好体验。

Look back on the past, face up to the present, foresee the future.

The outstanding performance of NB FUJI elevator is derived from the integration of excellent inheritance and innovation and transformation.

In the long history of growth, NB FUJI elevator firmly believes in the strong vitality of the craftsman spirit, inherits the spirit of craftsmanship, the concept of professionals and excellent skills in the Japan's Great Industrial Era, and it has created extraordinary masterpiece that present the quality of life.

At the same time, with continuous technological innovation, NB FUJI elevator foresees market development, insights into the needs of life, and interprets the new generation model with high-tech aesthetics, performing well in the current and future intelligent era.

Driven by great wisdom, technology leads the future

As a leader in high-quality elevator services, NB FUJI elevator, which is full of forward-looking thinking and responsible feelings, has begun a new evolutionary journey, to serve urban life with more humane, environmentally friendly and intelligent solutions, bringing high-class experience to society.

不仅拥有领先的自动化设备，更通过先进的制造平台，让效率、品质相得益彰。

NB FUJI 积极打造集智能、安全、节能于一体的智造，引进国际先进电梯技术和生产工艺，数字化科学统筹管理，实现精益生产，从而为客户提供高品质的楼宇交通解决方案。

NB FUJI elevator not only has the leading automation equipment, but also complement efficiency and quality each other through advanced manufacturing platform.

NB FUJI elevator actively builds intelligent manufacturing integrating intelligence, safety and energy saving, introduces international advanced elevator technology and production technology, digital and scientific overall management, to realize lean production, so as to provide customers with high-quality building transportation solutions.



WORLD-CLASS, INDUSTRY-LEADING AND INTELLIGENT MANUFACTURING BASE

世界一流、行业领先的智造基地

自动化·数字化·智能化

Automation · Digitization · Intelligence

GUARDING YOUR HOME WHOLEHEARTEDLY TO BRING YOU SAFETY AND WARMTH

全心全意 守护家园安全温暖

INTELLIGENT CONTROL ACCOMPANY YOU TO ENJOY THE COLORFUL LIFE

智能控制 伴您尊享缤纷生活



停电应急救援 (标配)

停电或突发故障时, 电梯将运行至最近楼层平层开门, 确保乘客安全。

Emergency rescue of power failure (standard)

In case of power failure or sudden failure, the elevator will run until the nearest floor opens at the same level to ensure the safety of passengers.



安全环保

多重防护、安全同行, 按家装的高要求进行选材, 轿厢采用不锈钢、大理石等材料, 兼顾美观与环保。

Safety and environmental protection

Multiple protection safe peers, according to the high requirements of home improvement, the car is made of stainless steel, rock slab and other materials, giving attention to beauty and environmental protection.



高效运行、安装便捷

智能矢量控制, 轻松实现电梯直接停靠, 提高运行效率; 全串行通讯系统, 减少系统接线, 方便安装及布线。

Efficient operation, Easy installation

Intelligent vector control, realizing direct stop more easily, and improving the operational efficiency; Full serial communication system reduces system wiring, for easy installation and wiring.



精准开关门

永磁同步变频门机系统, 实际运行与控制器开关门的速度曲线完全一致, 平稳准确开门。

Accurate opening and closing door

Permanent magnet synchronous frequency conversion door-motor system, velocity diagram of actual operation and the controller switching door completely consistent, opening the door smoothly and accurately.



一键呼救 (标配)

一键呼救, 轿内利用物联网模块可实现远程与维保救援人员、值班室人员紧急通讯、应急救援。

One click for help (standard)

One-click call for help (standard), the car is realized by using the Internet of Things module, which can remotely communicate with maintenance and rescue personnel and duty room personnel for emergency rescue.



自动报警

故障自动报警, 可将故障信息发送给维保人员。

Automatic alarm

Auto-malfunction alarm, sending the fault information to the maintenance personnel.



智能语音呼叫系统

乘客进入电梯, 通过语音唤醒呼叫系统, 语音输入所要到达的楼层, 控制系统立即做出响应并执行指令。

Intelligent voice call system

The passenger enters the elevator, wakes up the calling system by voice, and enters the floor to be reached by voice. The control system immediately responds and executes the instructions.



最佳运行曲线

系统根据楼层高度自动计算出适合人体舒适的运行曲线, 同时提供丰富的控制功能。

Optimal operation curve

The system calculates the operation curve suitable for the human body automatically according to the height of the floor, Providing abundant control functions.



GREEN TECHNOLOGY ENERGY CONSERVATION TECHNOLOGY PIONEER

绿色科技 化身科技节能先锋



SHAFT FRAME

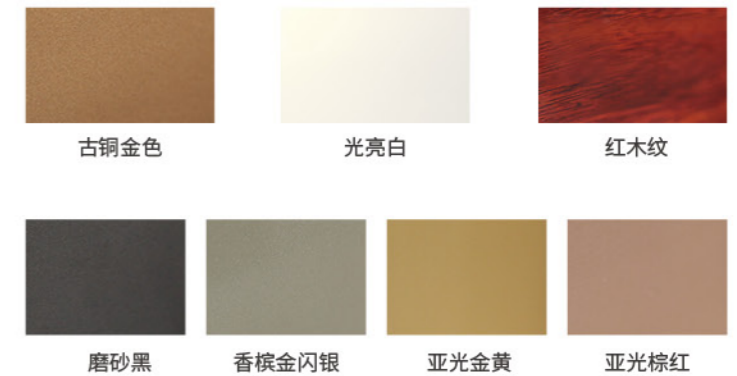
井道框架

在室外或户内加装家用电梯时，铝合金框架是您快速搭建井道的首选。其中铝合金框架采用模块化预制，积木式安装，标准电梯框架仅需1天即可完成，最大限度缩短安装时间。

When installing home elevators outdoors or indoors, the aluminum alloy frame is your first choice for quick hoistway construction. Among them, the aluminum hafnium gold frame adopts modular prefabrication and modular installation. The standard elevator frame can be completed in only one day, which minimizes the installation time.



型材颜色



框架玻璃



自动照明技术

轿厢自动照明技术，无人使用时照明灯处于熄灭状态，有人使用，自动打开，低功耗运行，真正实现绿色环保节能新指标。

Automatic lighting technology

Automatic lift car lighting technology, which is off during non-working state, and is on automatically when people use. Low power operation, realizing new index of environmental protection and energy saving.



永磁同步变频门机

永磁同步变频门机，低功率：0.5KW，大转矩：2.7N·m，速度、位置、力矩全闭环控制，无需位置反馈开关，节能的同时降低故障率；

Permanent magnet synchronous frequency conversion portal crane

Permanent magnet synchronous frequency conversion machine is of a low power of 0.05KW and high torque of 2.7N·m. It enables the full closed loop control of speed, position and torque, in which case the position feedback switch is not necessary. It is not only energy-efficient but is able to reduce failure rate.



LED 照明系统

全 LED 自动照明系统，有效降低能耗；标配家用单相 AC220V 电源（有偿选配三相 AC380V）。

LED lighting system

Full LED automatic lighting system, effectively reducing energy consumption; 220V home power supply, for easy installation (Paid optional three-phase AC380V).



曳引式家用电梯控制柜

一体化控制器、通讯方式串行
内置断电自动再平层装置 ARD、物联网
外呼信号通讯连接 AMP 插件
适配提升高度 ≤ 20M，速度 ≤ 0.4m/s
电压 AC220V/AC380 可选

Traction type home elevator control cabinet

Integrated controller, serial communication
Built-in power failure automatic re-leveling device ARD, Internet of Things
Outbound signal communication connection AMP plug-in
Adapted lifting height ≤ 20M, speeds ≤ 0.4m/s
Voltage AC220V/AC380 optional



永磁同步无齿轮曳引机

独特的永磁同步无齿轮曳引机，免维护，无污染，1.1KW 超低能耗，宛若冰箱等电器，有效节能 35% 以上。

Permanent magnetic synchronous gearless traction machine

Unique permanent magnet synchronous gearless steel strip traction machine, maintenance-free, pollution-free, 1.1KW ultra low energy consumption, just like the refrigerator and other electrical appliances, which saves more than 35% of energy.

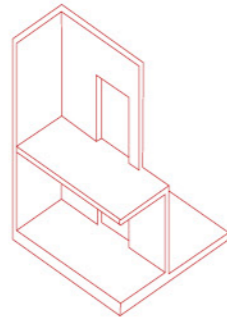
TAILOR-MADE DESIGN FOR VARIOUS STRUCTURES

定制化设计 满足多样化结构

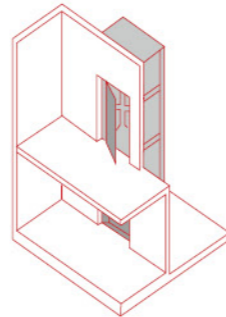
NB FUJI 强大的结构设计能力和丰富的安装经验总能为您的空间结构提供合理的安装布置方案，即使很小的空间也能享受 NB FUJI 别墅电梯带来的高尚生活。

NB FUJI's powerful structure design ability and abundant installation experience always provide reasonable installation layout for your home's space structure, and even a very small space can enjoy the noble lift of villa.

室外加装 Installed outdoors

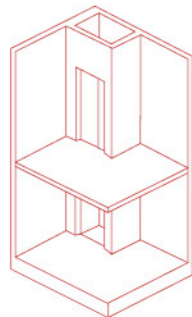


建筑内没有合适的位置可安装在室外
It can be installed outdoors if there is no suitable position indoors

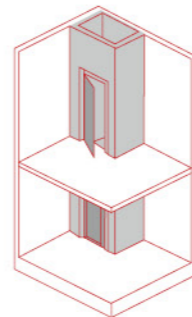


在室外加装井道安装别墅电梯
Additional shaft outdoors for villa elevator

混凝土井道 Concrete shaft

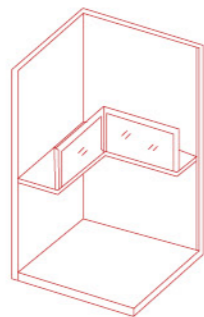


建筑预留专用井道
Reserved shaft in the building

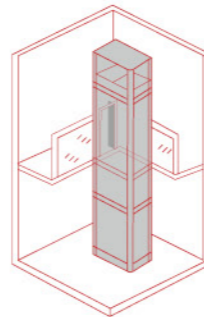


别墅电梯可直接安装在预留井道内
Villa elevator can be installed directly in the reserved shaft

中空大厅 Spacious hall

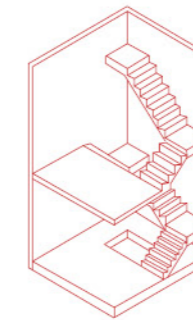


客厅或房间中有中空位置
Space available in the sitting room or other rooms

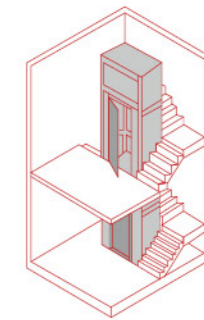


可加装井道安装别墅电梯
Home elevator can be installed with additional shaft

环绕楼梯 Around the stairs

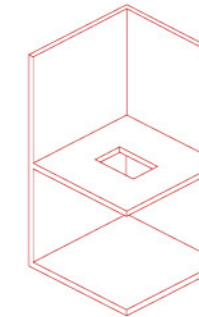


靠近楼梯周围有适当的空间
Suitable space near the stairs

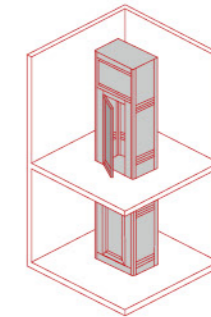


可在周围适当位置安装别墅电梯
Villa elevator can be installed at suitable position

楼板开孔 Opening at the floor



想要安装在室内，却没有合适的空间
You want to install it indoors but there is no suitable space

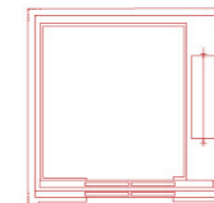


在合适的楼板位置加装井道安装别墅电梯
Additional shaft at the suitable position of the floor

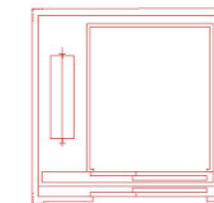
多种开门方式 选择不同品位生活 Alternative door styles Different choice

NB FUJI 别墅电梯采用多种开门方式供用户选择，同时可根据用户的需求和使用情况专门设计。

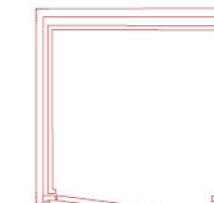
Varies of kinds door open style provided for you, you can choose any one of them as per your needs for your building requirement.



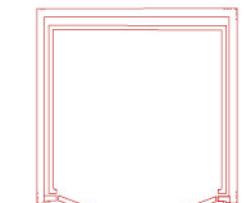
中分式
Center-opening



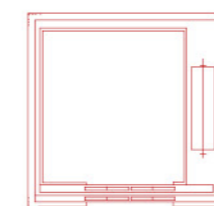
旁开式
Side-opening



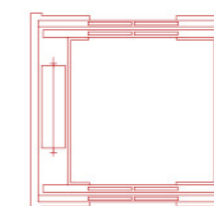
自动式
Automatic door



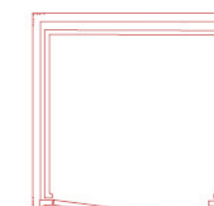
中分平开
Center-opening & side hung door



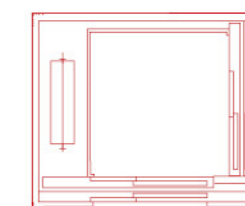
中分双折门
Center-opening & double-folded



贯通门
Through type



手拉式
Manually operated door



直角开门
Right-angled door

TRACTION TYPE VILLA ELEVATOR

曳引钢丝绳别墅电梯

NB FUJI 别墅电梯，秉承欧洲私人电梯领域顶尖技术，传承国际经典设计理念，融汇艺术性，实用性与时代性于一体，与别墅、私人豪宅的高层次品味十分吻合。

NB FUJI villa elevator, inheriting the leading technology of European private elevator industry, adhering to the international classical design concept and combining art, practicality and contemporary, coincides with the high-level taste of villas and private luxury real estate.

曳引式家用电梯的特点

- ◎ 无需传统机房：节省建筑成本
- ◎ 可根据房屋结构的开门需求采用背包架式和龙门架式电梯结构
- ◎ VVVF 驱动技术：家用电梯专用微板控制，平稳舒适
- ◎ 专用曳引机机架：固定于导轨，建筑物可不承担受力
- ◎ 主机：可采用 220V 单相电源，普通家用电源，无需另外申请工业电源
- ◎ 自动专用门机：变频节能，安全可靠
- ◎ UPS（后备电源）在停电时可以应急放人
- ◎ 运行时总额定功率 1.5KW（其中驱动系统 1.1KW）

Characteristics of a traction type home elevator

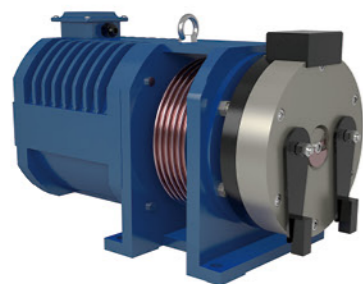
It does not need machine room. It saves the building cost.
It applies counter level style and gantry style elevator structure according to door opening requirements of the housing structure.
VVVF drive technology: Home elevator dedicated micro-computer control is smooth and comfortable.
Special traction machine base frame is fixed on guiderail. The building does not bear any load.
Machine: It can apply 220V single-phase power supply of ordinary family use. It does not need to apply for industrial power supply.
Automatic door operator: Variable frequency energy-saving, safe and reliable
UPS (backup) can release the passengers during power failure.
In the operation, total rated power is 1.5KW including 1.1KW for drive system.

内转子曳引主机，小巧轻便

曳引轮双支撑式结构，运行更稳定
别墅梯的理想选择，节能环保、噪音小、性价比高

Inner rotor traction machine, small, light and convenient

Double-support structure of traction wheel for more stable operation
Villa ladder ideal choice, energy conservation and environmental protection, low noise, cost-effective



STEEL BELT VILLA ELEVATOR

曳引钢带别墅电梯

新型的钢带曳引式家用电梯产品，轿壁装饰为三面镶嵌式，中间装饰可拆卸，可采用不同材质，互换性更强，可满足客户的多样化、个性化需求。

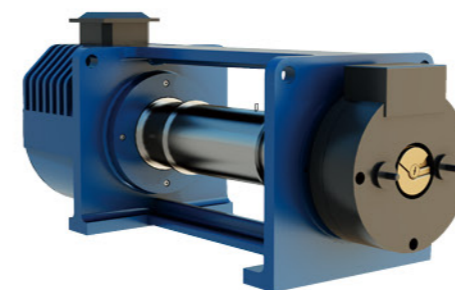
New steel-band traction type home elevator gets 3-side inlaid type for the car. Center decoration can be removed. It applies different materials with the stronger inter-changeability. It can satisfy the clients' diverse and individual requirements.

钢带主机，绿色环保

钢带机结构紧凑，绳轮直径以及体积小
反绳轮直径小，可布置在轿顶或轿底下梁中
钢带与绳轮非刚性接触，噪音更小，舒适感更强
钢带机绳轮直径比传统绳轮小很多，主机的效率比同类电机高 15%-20%，更节能

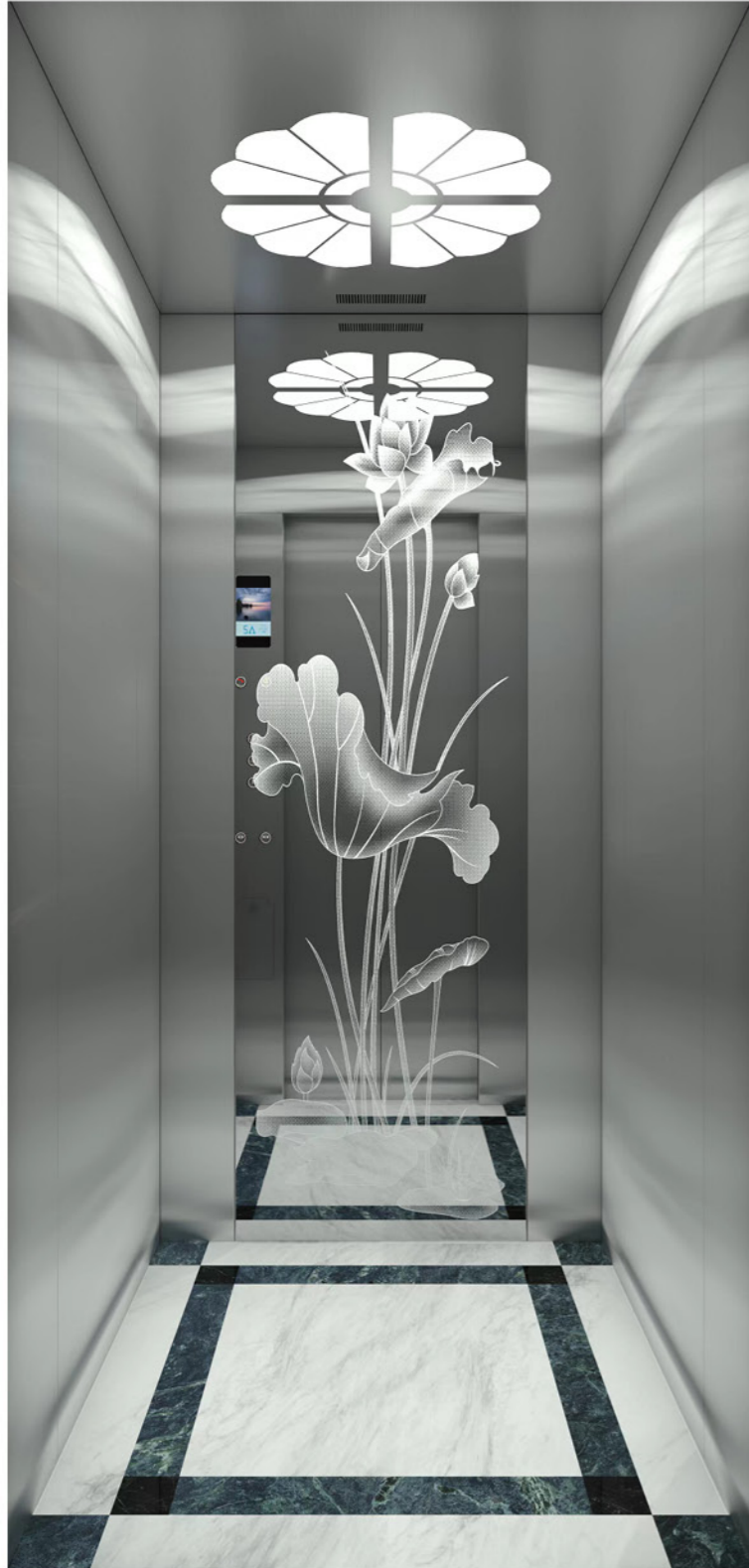
Steel belt traction machine, environmental protective

Steel Belt Machine Structure Compact, rope wheel diameter and small size
The reverse rope wheel is small in diameter and can be arranged in the top or bottom beam of the sedan chair
The steel belt and the rope wheel non-steel contact, the noise is smaller, the comfortable feeling is stronger
Steel belt machine rope wheel diameter is much smaller than the traditional rope wheel, the main engine efficiency than the same type of motor 15%-20%, more energy-saving



MODERN AND SIMPLE CAR DECORATION

现代简约轿厢装潢



NB-V101 标准轿厢 Standard Car

吊顶：发纹不锈钢，亚克力板，LED 节能灯 (NB-C19)
前壁：发纹不锈钢
侧壁：发纹不锈钢
轿壁：发纹不锈钢，镜面蚀刻
地板：PVC(NB-F02)

Ceiling: Hairline stainless steel, acrylic board, LED energy saving lamp (NB-C19)
Front wall: Hairline stainless steel
Side wall: Hairline stainless steel
Rear wall: Hairline stainless steel, mirror etching
Floor: PVC (NB-F02)



轿厢 360°全景展示

图片系电脑绘制，可能与实物略有不同。
The picture is drawn by computer, which may be slightly different from the final product.



NB-V102

吊顶：镜面不锈钢，LED 筒灯
前壁：钛金发纹不锈钢
侧壁：钛金发纹不锈钢，镜面不锈钢
后壁：钛金发纹不锈钢，镜面不锈钢
地板：PVC

Ceiling: Mirror stainless steel, LED tube light
Front wall: Titanium hair grain stainless steel
Side wall: Titanium hair grain stainless steel, mirror stainless steel
Rear wall: Titanium hair grain stainless steel, mirror stainless steel
Floor: PVC



轿厢 360°全景展示

NB-V103

吊顶：白色漆面 + 黑钛边条
前壁：黑钛不锈钢
侧壁：木纹钢板和黑钛组合
后壁：木纹钢板和黑钛组合
扶手：钛金不锈钢圆扶手 (选配)
地板：PVC

Ceiling: White lacquer + black titanium edge strip
Front wall: Black titanium stainless steel
Side wall: Wood grain finishes and black titanium combinations
Rear wall: Wood grain finishes and black titanium combinations
Handrail: Titanium stainless steel round handrail (option)
Floor: PVC



轿厢 360°全景展示

图片系电脑绘制，可能与实物略有不同。
The picture is drawn by computer, which may be slightly different from the final product.



ELEGANT CHINESE CAR DECORATION

典雅中式轿厢装潢



NB-V201

吊顶：古铜镜面不锈钢嵌条，LED筒灯+金箔纸饰面，暗藏式灯带
前壁：抗指纹古铜雾面不锈钢
侧壁：古铜镜面不锈钢，抗指纹古铜雾面嵌条，影木装饰板
后壁：古铜镜面不锈钢，中间古铜镜面蚀刻不锈钢
地板：拼花大理石

Ceiling: Bronze mirror stainless steel insert, LED lighting+gold paper, concealed lamp belt
Front wall: Afpanti-fingerprint bronze mist side stainless steel
Side wall: Bronze mirror stainless steel, Afpanti-fingerprint bronze mist side, Shadow wood decorative
Rear wall: Bronze mirror stainless steel, middle bronze mirror etched stainless steel
Floor: Parquet marble



轿厢 360°全景展示

图片系电脑绘制，可能与实物略有不同。
The picture is drawn by computer, which may be slightly different from the final product.



NB-V202

吊顶：喷涂钢板框架，暗藏灯带，筒灯
前壁：香槟金发纹不锈钢
轿壁：香槟金镜面不锈钢，香槟金发纹不锈钢，木饰面
后壁：香槟金镜面不锈钢蚀刻，香槟金发纹不锈钢
地板：PVC

Ceiling: Sprayed steel plate without frame, concealed lamp belt, Tube lamp
Front wall: Champagne golden hairline stainless steel
Side wall: Champagne golden mirror stainless steel, champagne golden hairline stainless steel, wood decoration
Rear wall: Champagne golden mirror stainless steel etching, champagne golden hairline stainless steel
Floor: PVC



轿厢 360°全景展示

NB-V203

吊顶：喷涂钢板框架，暗藏灯带
前壁：钛金不锈钢
侧壁：木饰面，钛金不锈钢
后壁：装饰画，木饰面，钛金不锈钢
地板：PVC

Ceiling: Sprayed steel frame, hidden lamp belt
Front wall: Titanium stainless steel
Side wall: Wood decoration, titanium stainless steel
Rear wall: Decorative painting, wood decoration, titanium stainless steel
Floor: PVC



轿厢 360°全景展示

图片系电脑绘制，可能与实物略有不同。
The picture is drawn by computer, which may be slightly different from the final product.



CLASSICAL EUROPEAN CAR DECORATION

古典欧式轿厢装潢



NB-V301

吊顶：香槟金不锈钢框架，香槟金镜面蚀刻，吸顶灯，LED 照明
前壁：香槟金喷砂不锈钢
侧壁：香槟金喷砂不锈钢
轿壁：香槟金喷砂不锈钢，镜面蚀刻不锈钢
扶手：香槟金不锈钢与实木组合
地板：大理石

Ceiling: Stainless steel frame (champaign gold), mirror etching (champaign gold), absorb dome light LED lighting
Front wall: Champaign gold sandblasted stainless steel
Side wall: Champaign gold sandblasted stainless steel
Car wall: Champaign gold sandblasted stainless steel, mirror etching stainless steel
Handrail: Champagne stainless steel and solid wood combination
Floor: marble



轿厢 360°全景展示

图片系电脑绘制，可能与实物略有不同。
The picture is drawn by computer, which may be slightly different from the final product.



NB-V302

吊顶：古铜不锈钢，LED 灯带
前壁：古铜不锈钢
侧壁：古铜蚀刻不锈钢，古铜镜面不锈钢
后壁：古铜蚀刻不锈钢，古铜镜面不锈钢
地板：PVC（选配大理石）

Ceiling: Copper stainless steel, LED light band
Front wall: Copper stainless steel
Side wall: Copper etching stainless steel, copper mirror surface stainless steel
Rear wall: Copper etching stainless steel, copper mirror surface stainless steel
Floor: PVC (optional marble)



轿厢 360°全景展示

NB-V303

吊顶：镜面不锈钢、LED 筒灯、白色亚克力透光板
前壁：黑钛镜面不锈钢
侧壁：灰白橡木化妆钢板，黑钛不锈钢嵌条
轿壁：灰白橡木化妆钢板，新型超薄岩板，黑钛不锈钢嵌条
地板：大理石

Ceiling: Mirror stainless steel, LED downlight, white acrylic transparent board
Front wall: Black titanium mirror stainless steel
Side wall: Gary-white makeup steel plate, black titanium stainless steel insert
Car wall: Gary-white makeup steel plate, new ultra-thin rock plate, black titanium stainless steel insert
Floor: marble



轿厢 360°全景展示

图片系电脑绘制，可能与实物略有不同。
The picture is drawn by computer, which may be slightly different from the final product.



SIGHTSEEING SERIES CAR DECORATION

观光系列轿厢装潢



NB-V401

吊顶：镜面不锈钢、亚克力透光板，LED筒灯
前壁：发纹不锈钢
侧壁：发纹不锈钢 + 观光玻璃
后壁：观光玻璃
地板：PVC地毯纹地板（选配大理石）

Ceiling: Hairline stainless steel, acrylic, LED Tube Lamp
Front wall: Hairline stainless steel
Side wall: Hairline stainless steel + safety laminated glass
Rear wall: Safety laminated glass
Floor: PVC(optional marble)



轿厢 360°全景展示



NB-V402

吊顶：玫瑰金不锈钢框架，亚克力透光板
前壁：玫瑰金不锈钢
侧壁：玫瑰金不锈钢，安全夹胶玻璃
后壁：玫瑰金不锈钢，安全夹胶玻璃
地板：标配PVC（选配大理石）

Ceiling: Rose gold mirror stainless steel frame, acrylic transparent plate
Front wall: Rose gold stainless steel
Side wall: Rose gold stainless steel, safety laminated glass
Back wall: Rose gold stainless steel, safety laminated glass
Floor: Standard PVC (optional marble)



轿厢 360°全景展示

NB-V403

吊顶：星空顶
前壁：黑钛不锈钢，安全玻璃
侧壁：黑钛不锈钢，安全玻璃，灯带
后壁：黑钛不锈钢，安全玻璃
地板：PVC

Ceiling: Starry sky top
Front wall: Black titanium stainless steel, safety glass
Side wall: Black titanium stainless steel, safety glass, light strip
Rear wall: Black titanium stainless steel, safety glass
Floor: PVC



轿厢 360°全景展示



HUMAN-MACHINE INTERFACE

人机界面



NB-COP-01
一体式操纵箱
Integrated COP
标配 Standard



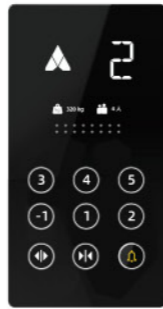
NB-LOP-01
无底盒
Without bottom case
标配 Standard

触摸屏

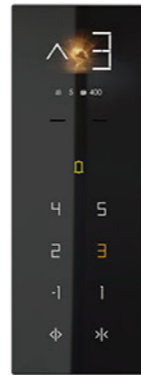
Touch screen series



NB-COP-10
选配
Optional



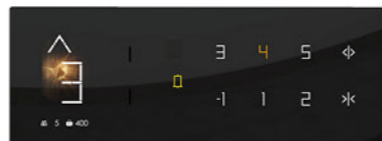
NB-COP-11
选配
Optional



NB-COP-12
选配
Optional



NB-COP-13
选配
Optional



NB-COP-14
选配
Optional

外呼控制

LOP control



NB-LOP-10
选配
Optional



NB-LOP-11
选配
Optional



NB-LOP-12
选配
Optional



NB-LOP-13
选配
Optional

CAR CEILING (OPTIONAL)

吊顶 (选配)



NB-C20
发纹不锈钢框架, LED 灯
Hairline stainless steel frame, LED lights



NB-C21
发纹不锈钢框架, LED 灯
Hairline stainless steel frame, LED lights



NB-C17
不锈钢框架, 亚克力透光板
Stainless steel frame, acrylic



NB-C22
中间是影像平面, 两侧为不锈钢底板上辅以筒灯的柔光照明设计
Middle with image roof, side of stainless steel floor with tube lamp for soft illumination design



NB-C23
金属白色汽车烤漆, LED 氛围灯, 水晶亚克力灯条
Metal-white automotive paint, LED atmosphere light, crystal acrylic light bar



NB-C24
金属烤漆, 黑钛不锈钢嵌条, 氛围灯带
Metal baking varnish, black titanium stainless steel molding, atmosphere light strip



NB-C25
古铜不锈钢, LED 灯带
Bronze stainless steel, LED light strip



NB-C26
星空顶
Starry sky top

图片系电脑绘制, 可能与实物略有不同。
The picture is drawn by computer, which may be slightly different from the final product.

图片系电脑绘制, 可能与实物略有不同。
The picture is drawn by computer, which may be slightly different from the final product.

LANDING DOOR SERIES (OPTIONAL)

厅门系列 (选配)



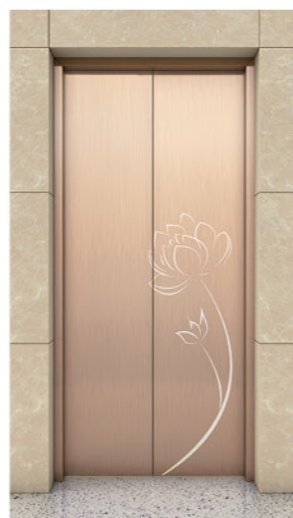
NB-D02

镜面、蚀刻
Mirror, etching



NB-D03

发纹不锈钢、蚀刻
Hairline stainless steel, etching



NB-D07

玫瑰金发纹不锈钢，蚀刻
Rose gold hairline stainless steel, etching



NB-D08

镜面不锈钢、蚀刻
Mirror stainless steel, etching



NB-D13

玫瑰金发纹不锈钢
Rose gold hairline stainless steel



NB-D14

古铜色发纹不锈钢
Bronze hairline stainless steel



NB-D15

香槟金发纹不锈钢
Champagne gold hairline stainless steel



NB-D16

钛金不锈钢
Titanium stainless steel



NB-D09

钛金镜面不锈钢、蚀刻
Titanium mirror stainless steel, etching



NB-D10

发纹不锈钢、蚀刻
Hairline stainless steel, etching



NB-D11

钛金发纹不锈钢蚀刻
Titanium gold grain stainless steel etching



NB-D12

玫瑰金发纹不锈钢蚀刻
Rose gold pattern stainless steel etching



NB-D17

木纹钢板
Wood grain steel plate



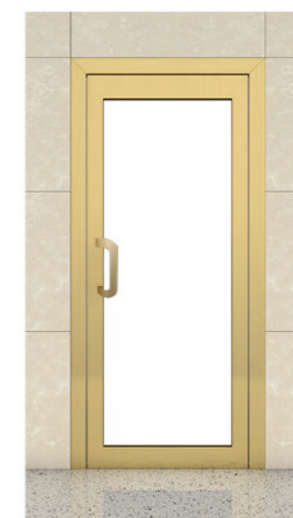
NB-D18

木纹钢板
Wood grain steel plate



NB-D19

黑钛，玻璃
Black titanium, glass



NB-D20

钛金不锈钢，玻璃（手拉门）
Titanium stainless steel, glass (hand-pulling door)

图片系电脑绘制，可能与实物略有不同。
The picture is drawn by computer, which may be slightly different from the final product.

图片系电脑绘制，可能与实物略有不同。
The picture is drawn by computer, which may be slightly different from the final product.

HANDRAIL (OPTIONAL)

扶手 (选配)

NB-H17

有机玻璃
Plexiglass



NB-H01

发纹不锈钢单管
Hairline stainless steel mono-tube



NB-H04

镜面钛金不锈钢单管
Titanium gold mirror stainless steel mono-tube



NB-H02

发纹不锈钢双管
Hairline stainless steel double-tube



NB-H05

镜面钛金不锈钢双管
Titanium gold mirror stainless steel double-tube



NB-H10

发纹不锈钢三联管
Hairline stainless steel tri-tube



NB-H11

镜面钛金不锈钢三联管
Titanium gold mirror stainless steel tri-tube



NB-H12

发纹板方扶手
Hairline stainless plate, square handrail



NB-H13

钛金板方扶手
Titanium gold plate, square handrail



NB-H03

不锈钢短纹, 圆弧头
short grain stainless steel, arc head



NB-H14

不锈钢钛金短纹, 圆弧头
short grain titanium gold stainless steel, arc head



NB-H15

不锈钢, 钛金组合
Combination of stainless steel and titanium gold



NB-H16

圆木和钛金组合
Combination of round wood and titanium gold

图片系电脑绘制, 可能与实物略有不同。
The picture is drawn by computer, which may be slightly different from the final product.

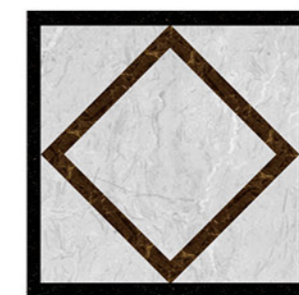
FLOOR

地板



NB-F02

标配 Optional



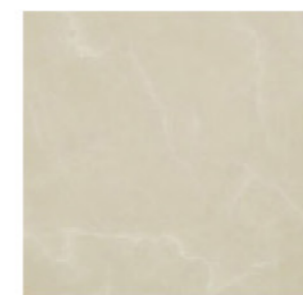
NB-F04

选配 Optional



NB-F05

选配 Optional



NB-F10

选配 Optional



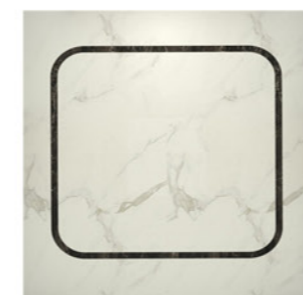
NB-F11

选配 Optional



NB-F12

选配 Optional



NB-F13

选配 Optional



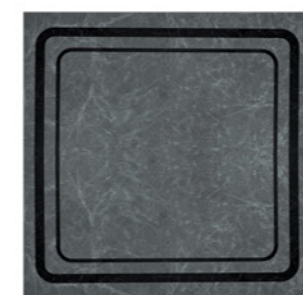
NB-F14

选配 Optional



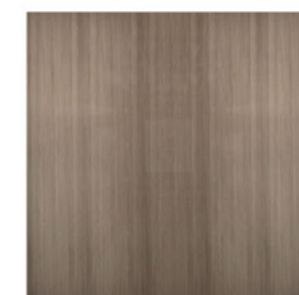
NB-F15

选配 Optional



NB-F16

选配 Optional



NB-F17

选配 Optional



NB-F18

选配 Optional

图片系电脑绘制, 可能与实物略有不同。
The picture is drawn by computer, which may be slightly different from the final product.

LAYOUT SPECIFICATIONS AND DIMENSIONS

土建规格及尺寸

YSFS-JT (钢丝绳和钢带任选)

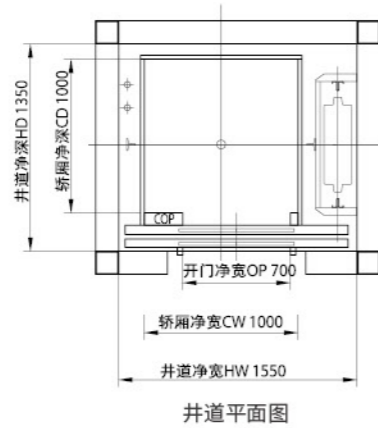
备注: 标准层高 3 米, 所有井道尺寸均为最小值
Note: Standard floor height is 3m

4 人 / 320 公斤



井道尺寸 Hoistway size:
HW×HD
1550×1350

轿厢尺寸 Car size:
CW×CD, OP
1000×1000, 700

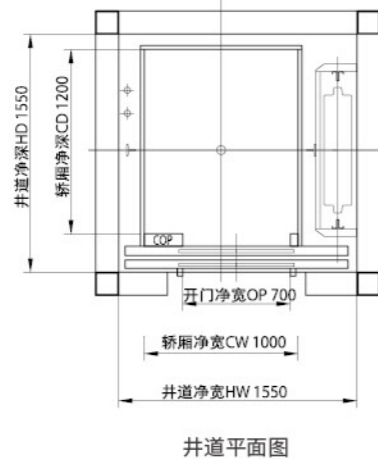


5 人 / 400 公斤



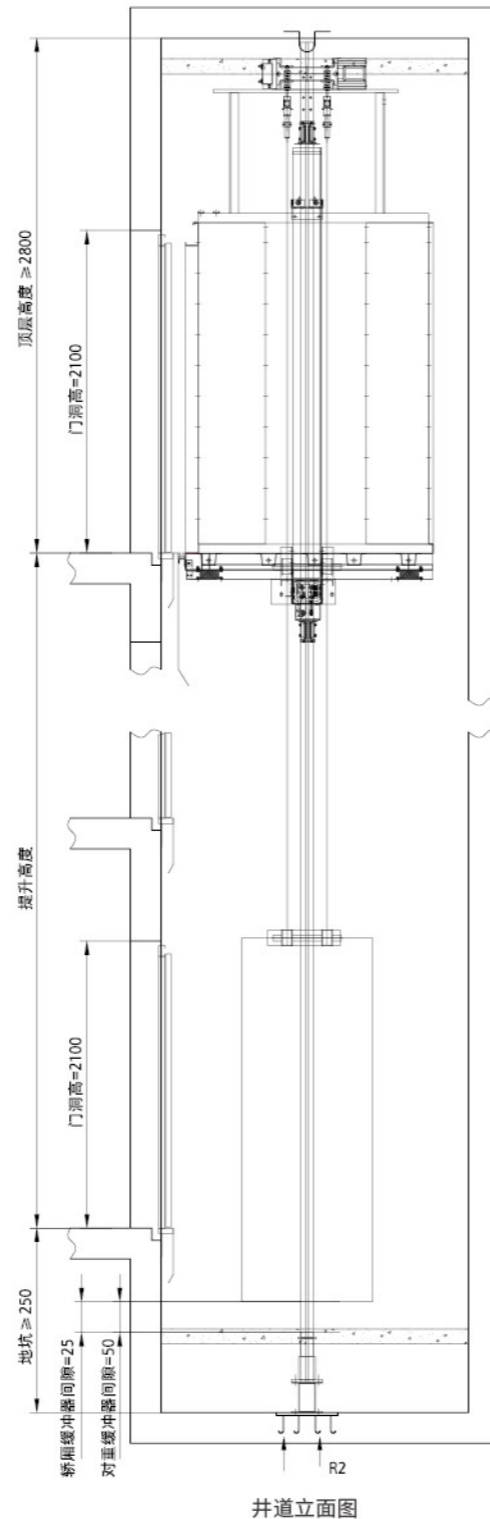
井道尺寸 Hoistway size:
HW×HD
1550×1550

轿厢尺寸 Car size:
CW×CD, OP
1000×1200, 700



YSFS-JT (钢丝绳和钢带任选)

载重 Load:	320kg, 400kg
速度 Speed:	0.4m/s
轿厢高度 Car height:	2400mm
开门高度 Opening height:	2100mm
顶层高度 Overhead height:	≥ 2800mm
底坑深度 Pit depth:	≥ 250mm
提升高度 Travelling height:	≤ 20000mm



LAYOUT SPECIFICATIONS AND DIMENSIONS

土建规格及尺寸

YSFS-JD (钢丝绳和钢带任选)

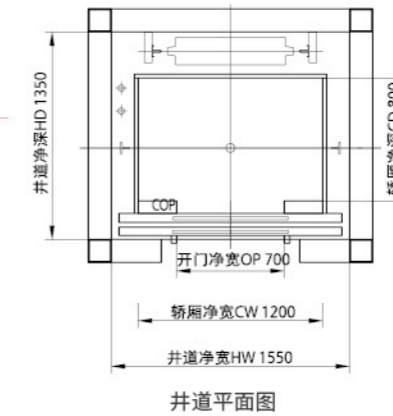
备注: 标准层高 3 米, 所有井道尺寸均为最小值
Note: Standard floor height is 3m

4 人 / 320 公斤



井道尺寸 Hoistway size:
HW×HD
1550×1350

轿厢尺寸 Car size:
CW×CD, OP
1200×800, 700

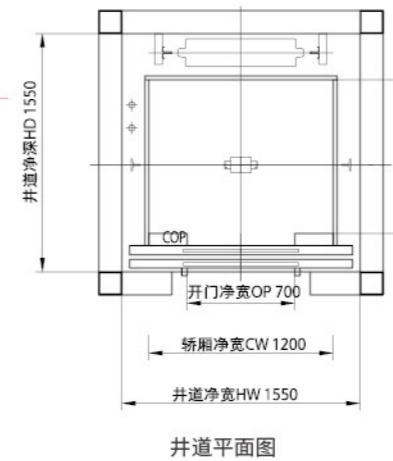


5 人 / 400 公斤



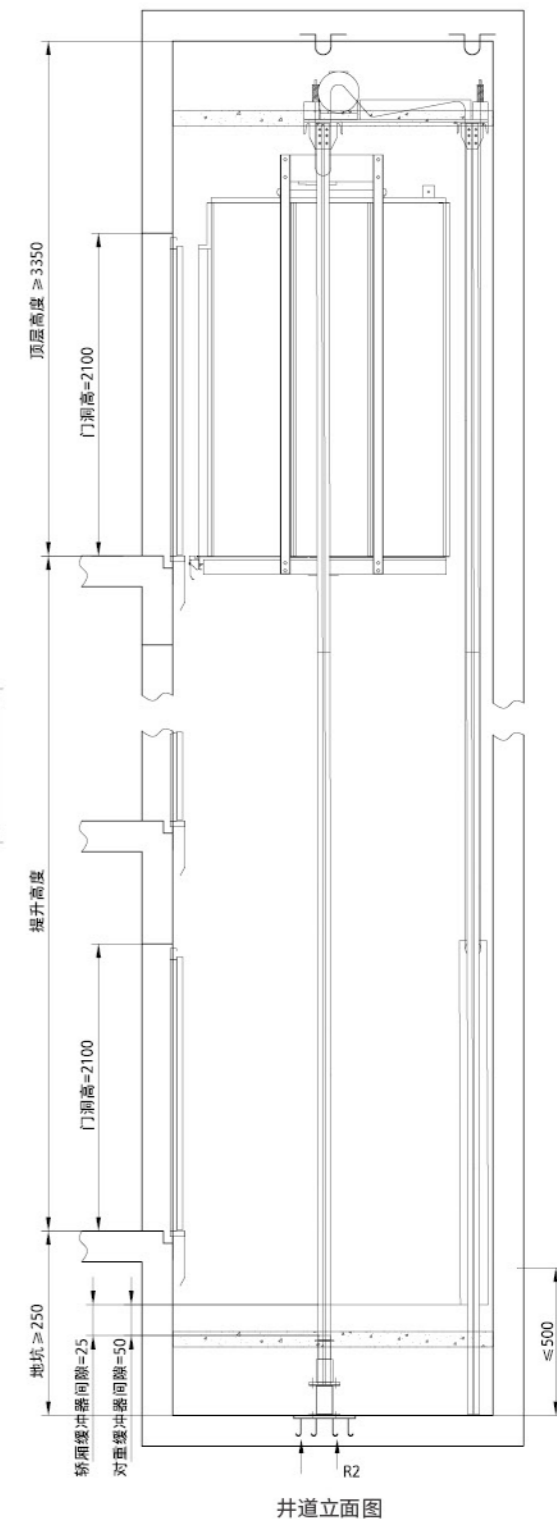
井道尺寸 Hoistway size:
HW×HD
1550×1550

轿厢尺寸 Car size:
CW×CD, OP
1200×1000, 700



YSFS-JD (钢丝绳和钢带任选)

载重 Load:	320kg, 400kg
速度 Speed:	0.4m/s
轿厢高度 Car height:	2400mm
开门高度 Opening height:	2100mm
顶层高度 Overhead height:	≥ 3350mm
底坑深度 Pit depth:	≥ 250mm
提升高度 Travelling height:	≤ 20000mm



注: 本样本所示图纸及规格参数仅供参考, 订货请与公司确认。
Note: the drawings and specifications shown on sample are only for your reference, any order please confirm with meilun company.

注: 本样本所示图纸及规格参数仅供参考, 订货请与公司确认。
Note: the drawings and specifications shown on sample are only for your reference, any order please confirm with meilun company.

FUNCTION TABLE

电梯功能

全面保护

General protection

关门时间保护 Closing time protection	外召按钮嵌入自诊断 Hb button embedded self-diagnosis
轿内紧急照明 Emergency lighting in the car	故障低速自救功能 Fault low-speed self-rescue
限位保护 Limit protection	防打滑保护 Prevent slipping protection
光幕门保护装置 The screen door protection device	安全回路保护 Safety circuit protection
轿顶与控制柜紧急电动运行 Car roof and control cabinet emergency electric operation	超载不启动（警示灯及蜂鸣器） Overload warning (Caution light and buzzer)
故障自动检测功能 Fault automatic diagnosis	上下极限保护装置 Upper and lower limit protection device
警铃 Alarm bell	门连锁保护 Door interlock protection
撞底缓冲装置 Hitting the bottom buffer device	运行接触器保护 Operation contactor protection
门区外不能开门 Outside door zone without opening door	电网电压波动检测功能 Wave detection of grid voltage
抱闸检测保护 Brake detection and protection	驱动设备过热保护 Driven equipment overheating protection (OHT)
接触器反馈检测功能 Contactor feedback detection	电动松闸 Electric brake
继电器检查保护 Relay detection protection	停电应急平层（ARD） Power-off emergency leveling (ARD)
速度反馈检测功能 Speed feedback detection	一键拨号功能 One-touch dial
逆向运行保护 Protection against reverse travel	

信息显示

Information display

厅外数字式位置指示器 Hall digital position indicator
轿厢数字式位置指示器 Car digital position indicator
轿厢运行方向显示 Car running direction display
楼层显示字符的任意设定 Floor display character arbitrary setting
厅和轿厢呼梯 / 登记 Hall and car call/register
运行次数显示功能 Running number display
厅外运行方向显示 Hall running direction display

保安监控

Security monitoring

- 监控室与机房、轿厢对讲（不含机房到监控室连线）
Intercom from monitor room to machine room, car (Exclude machine room wired to monitor room)
- CCTV 电缆（轿厢到机房）
CCTV cable (From car to machine room)
- 电梯远程监控
Elevator remote control
- BA 接口（干接点）
BA interface (Dry contact)
- 读卡器
Card reader
- 小区监视盘
Community monitoring panel
- 小区电脑监视
Community computer monitoring

平稳运行

Steady running

无呼自返基站功能 Return to base station without call
全集选控制 Full collective control
待梯层设定 Upon elevator floor setting
自动开关门（自动门 Automatic door） Automatic door switch
预转矩输出 Pre-torque output
满载不停梯 Full-load direct running (LNS)
井道自学习 Hoistway self-learning
端站换速及楼层号校正 End station for speed and floor number correction
驻停 Parking

舒适乘行

Comfortable ride

设置厅、轿门时间（自动门 Automatic door） Hall and car door setting time
开、关门按钮（自动门 Automatic door） Open and close button
轿内通风自动及照明自动控制功能 Automatic ventilation and lighting of automatic control in car
本层外召开门（自动门 Automatic door） Hb calls door opening
不停层设置 Bypassed stop setting
重复关门（自动门 Automatic door） Repeated closing door
输入口干扰评价 Input port evaluation
手动选层 Manually selected floor
误登陆取消 Cancellation of wrong landing
○ 语音报站 Voice announcement

注：○ 为选配功能
Note: ○ is optional function

PERFECT SERVICE SYSTEM IS TO SERVE YOU

完善的服务体系 旨在为您服务



提供全定制化的私人专享方案

提供一套完整的私人定制电梯解决方案。

Provide a whole customized exclusive plan
To provide a set of complete private exclusive elevator solution.



提供 360°效果选配预案

随心所欲的搭配，为您排忧解难。

Provide 360° visual plan for selection
Select as Your Wishes, Solve the Problem for You.



提供全程监理服务

保证每一个环节完美进行，顺利结束。

Provide full supervision service
To Ensure Each Segments are implemented perfectly and smoothly.



提供安装调试服务

确保了产品安全可靠、运行顺畅、乘坐舒适。

Provide installation and testing service
To ensure doppler's products run safely, stably, smoothly and comfortably.



24H 尊享家服务专线

保持通畅的尊贵服务专线，让您全天无忧。

7/24 Enjoy-Home Service Line
To remain the service real-time online and ensure no matter with you.